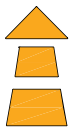
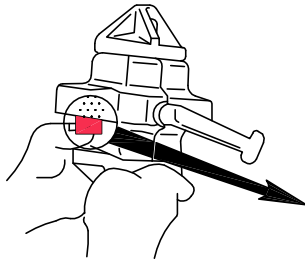


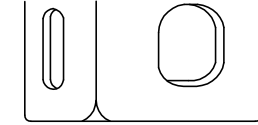
NA-3J OPERATE INSTRUCTION



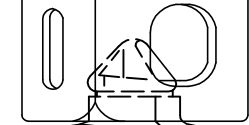
DETAIL OF INSERT



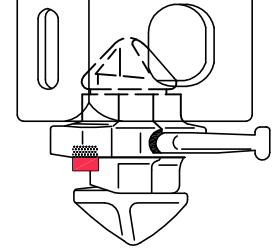
READY TO INSERT
THEN TWIST LOWER
CONE FOR UPPER OPEN



PUSH SAFETY PIN

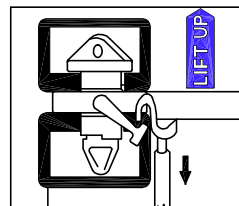
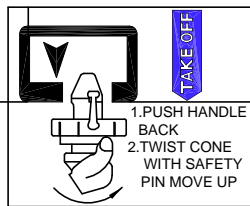
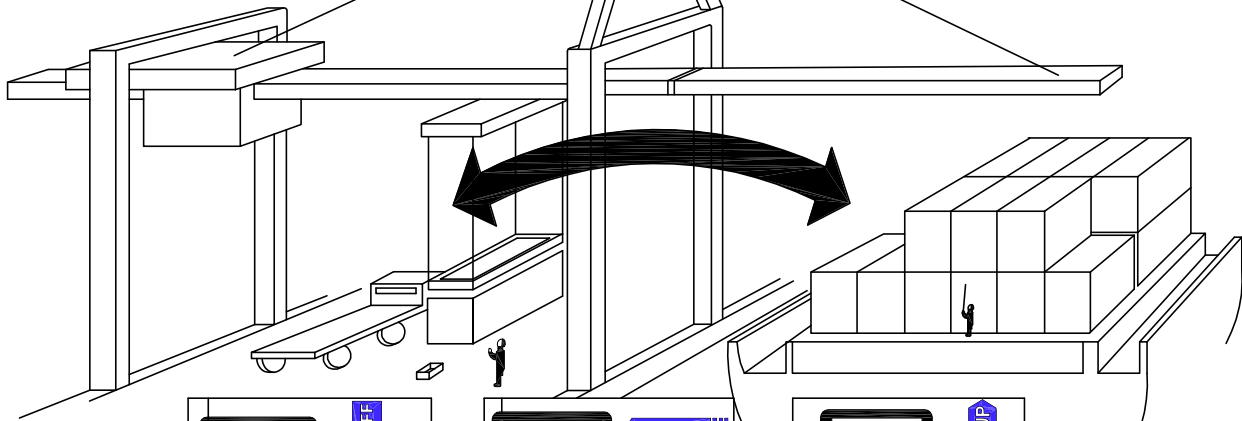
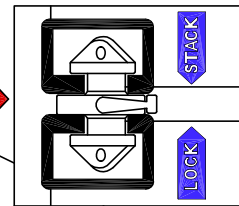
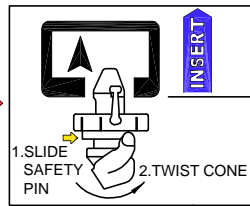


INSERT TO CORNER CASTING

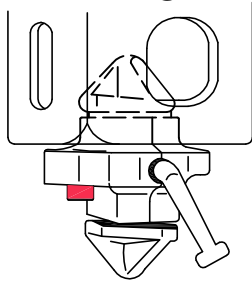


RELEASE YOUR HAND FOR
READY ON AUTO LOCK
POSITION

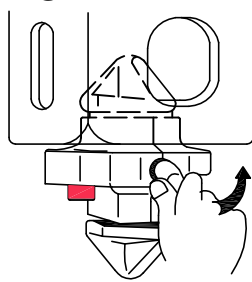
ON DECK



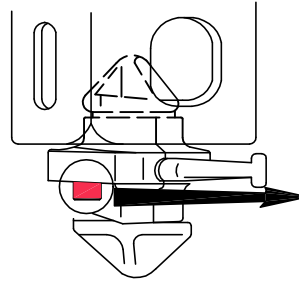
DETAIL OF TAKE OFF



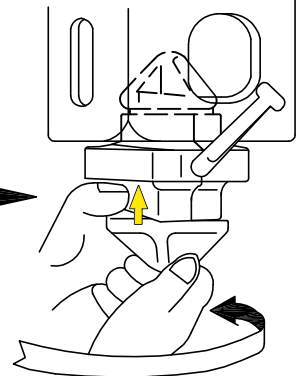
WHEN DISCHARGE TO SHORE SIDE
HANDLE INDICATE TO LOWER



PUSH HANDLE BACK TO
HORIZONTAL LEVEL



READY FOR TAKE OFF



1. PUSH IN SAFETY PIN
2. TWIST LOWER CONE BY CLOCK
WISE FOR LOCK OFF